



Planning and Transportation Committee

Date: TUESDAY, 9 OCTOBER 2012
Time: 11.00 am
Venue: LIVERY HALL - WEST WING, GUILDHALL

5. **REPORTS OF THE CITY PLANNING OFFICER RELATIVE TO PLANNING APPLICATIONS**

John Barradell
Town Clerk and Chief Executive

This page is intentionally left blank

Planning & Transportation Committee 9th October 2012

Page 1



Agenda Item 5

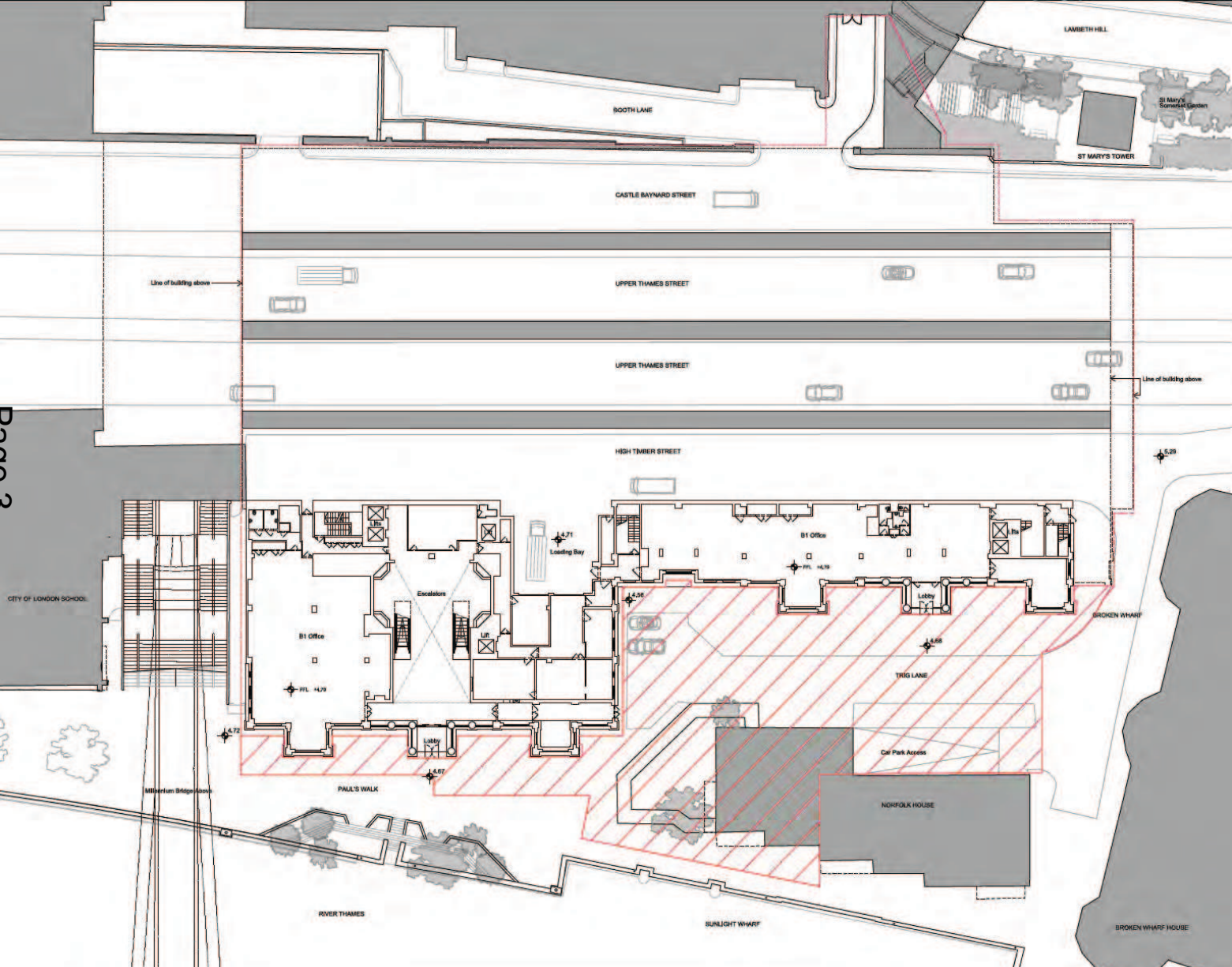
Millennium Bridge House



Site location plan

Millennium Bridge House

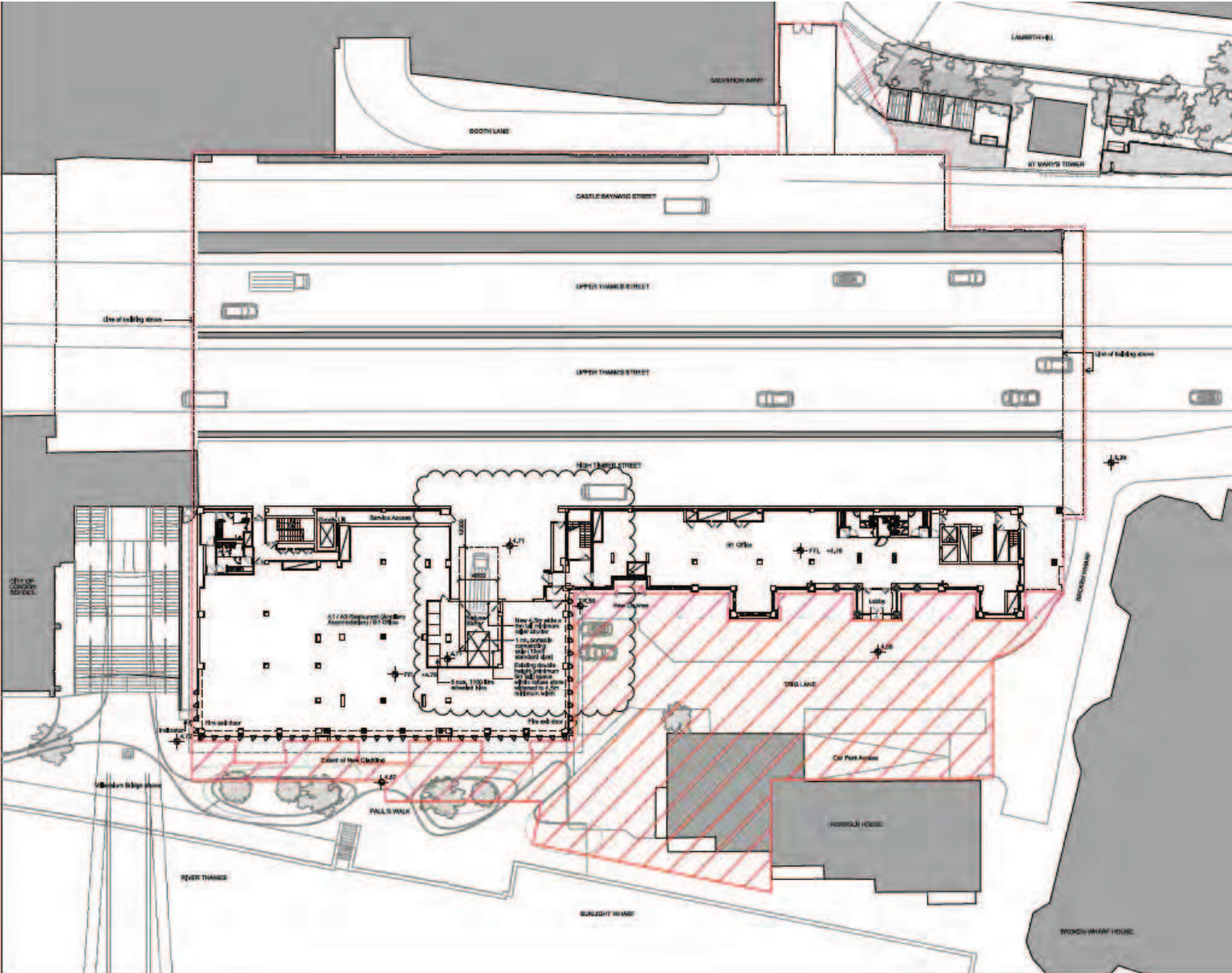
Page 3



Existing plan – Level 0

Millennium Bridge House

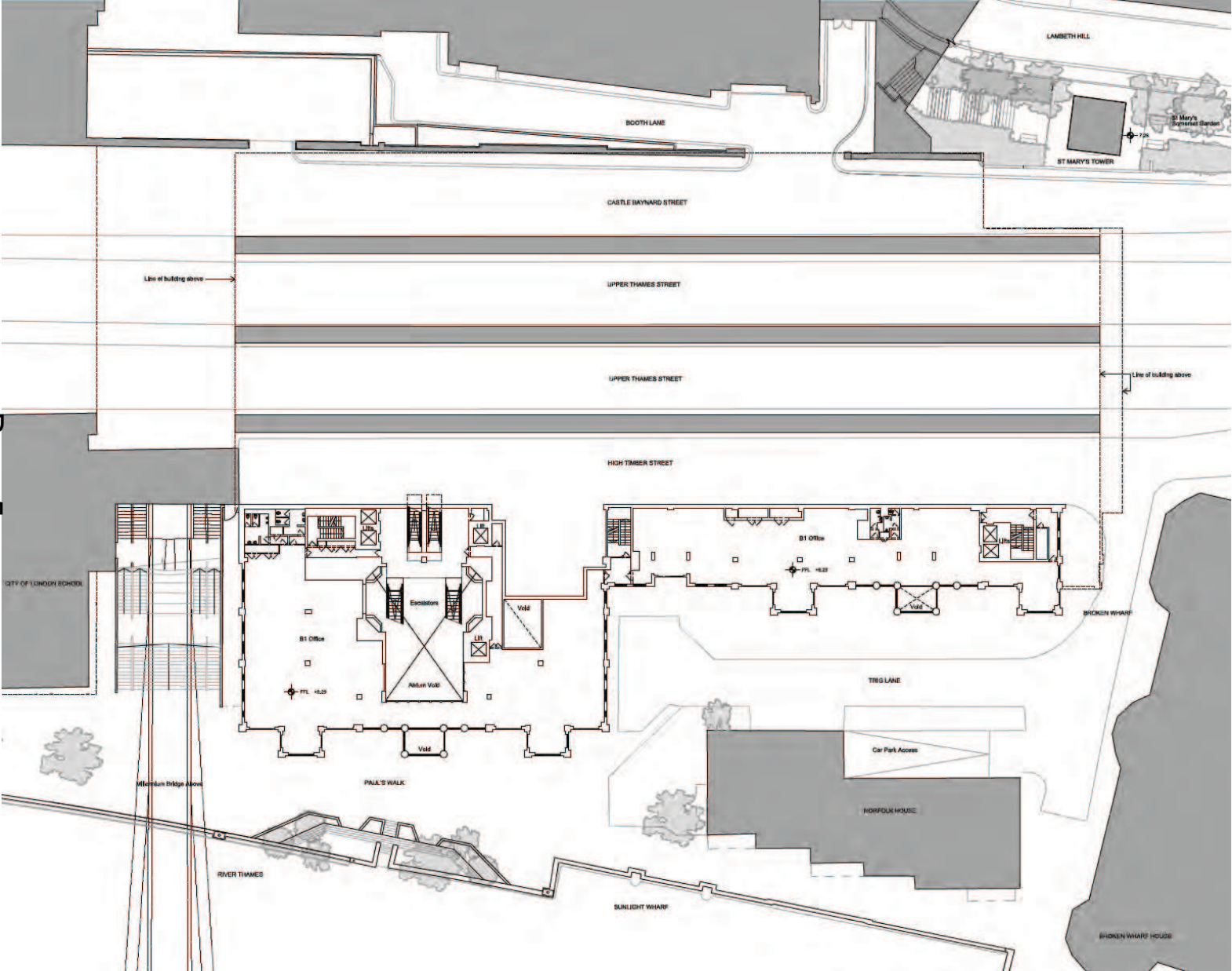
Page 4



Proposed plan – Level 0

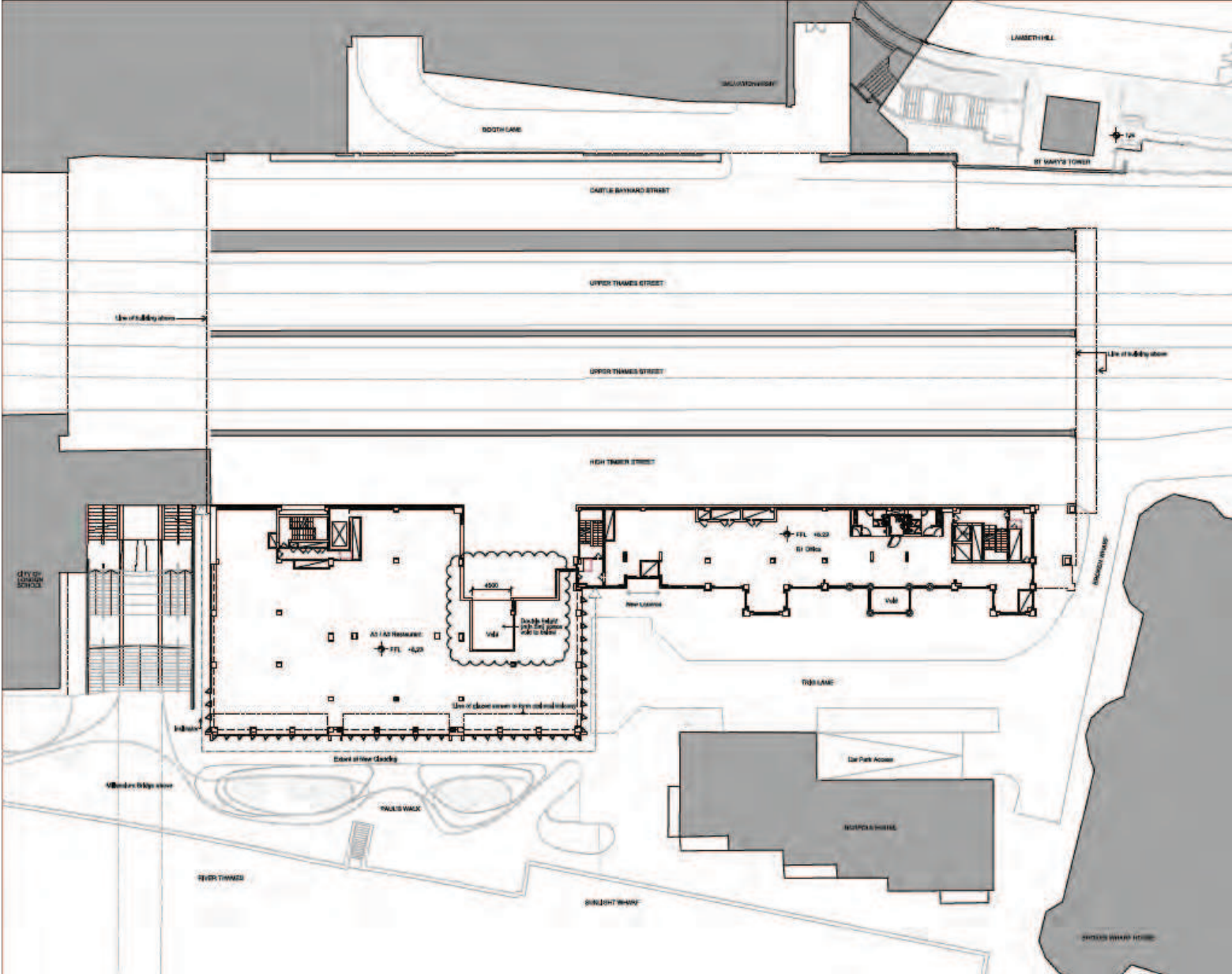
Millennium Bridge House

Page 5



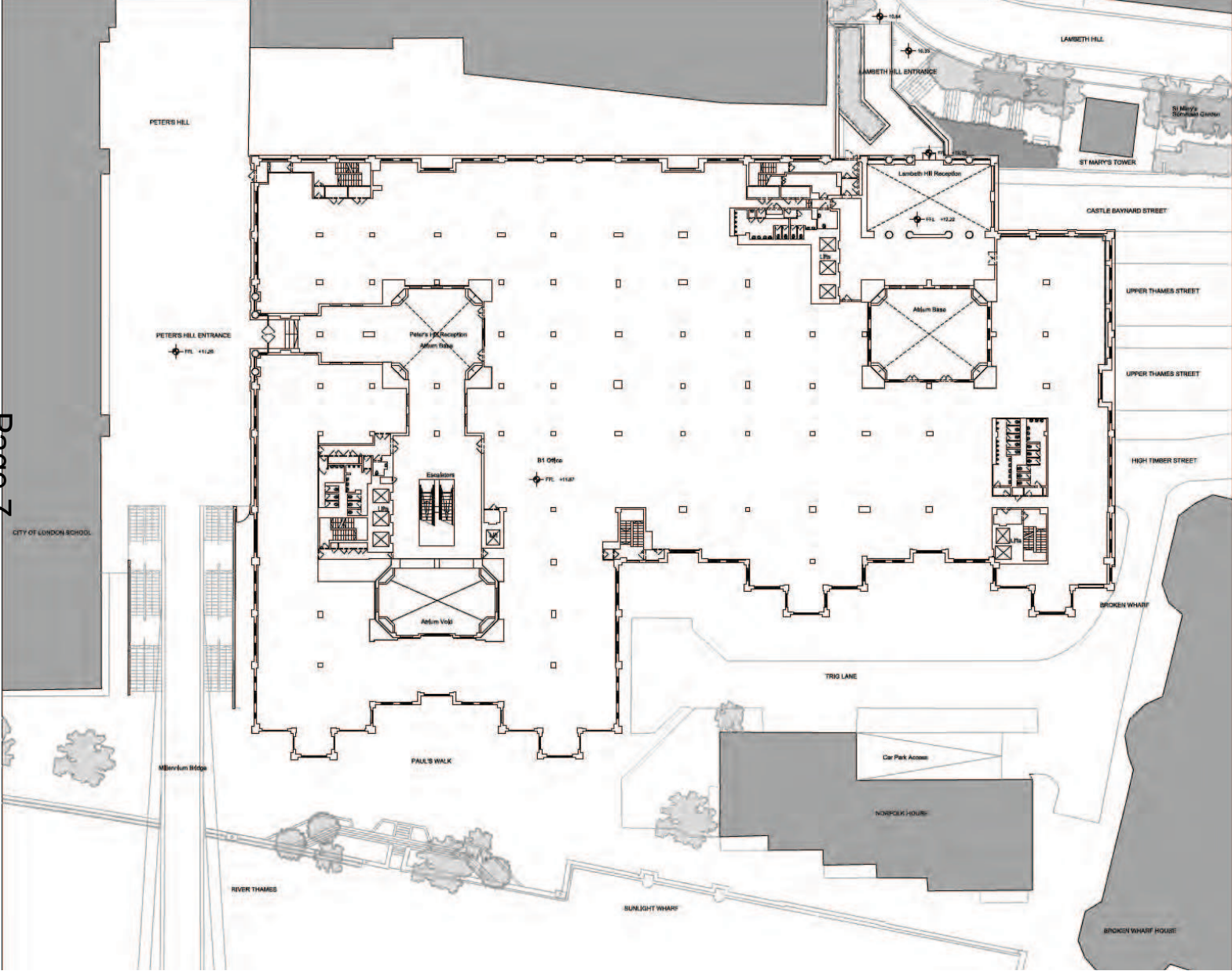
Existing plan – Level 1

Millennium Bridge House



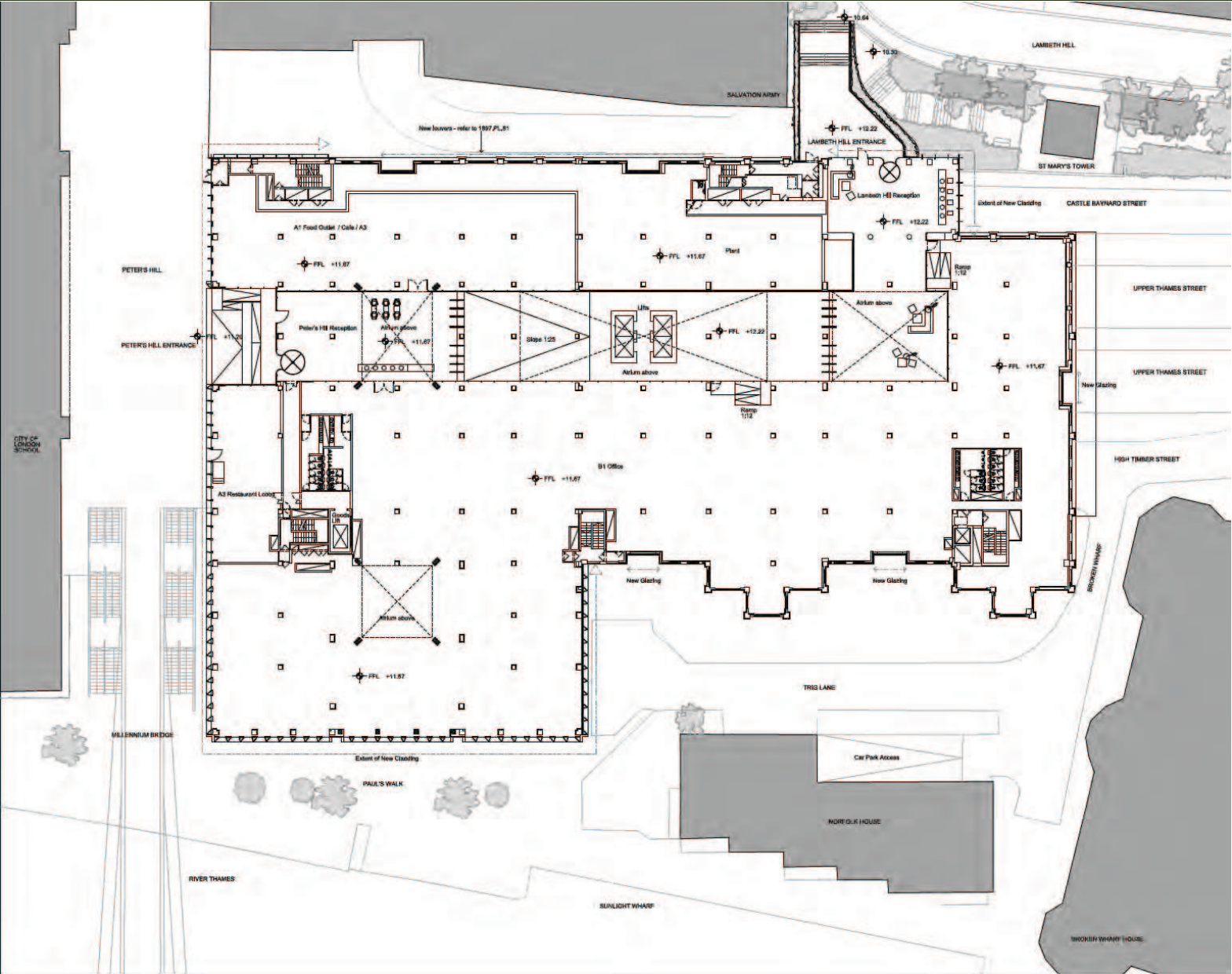
Millennium Bridge House

Page 7



Existing plan – Level 2

Millennium Bridge House

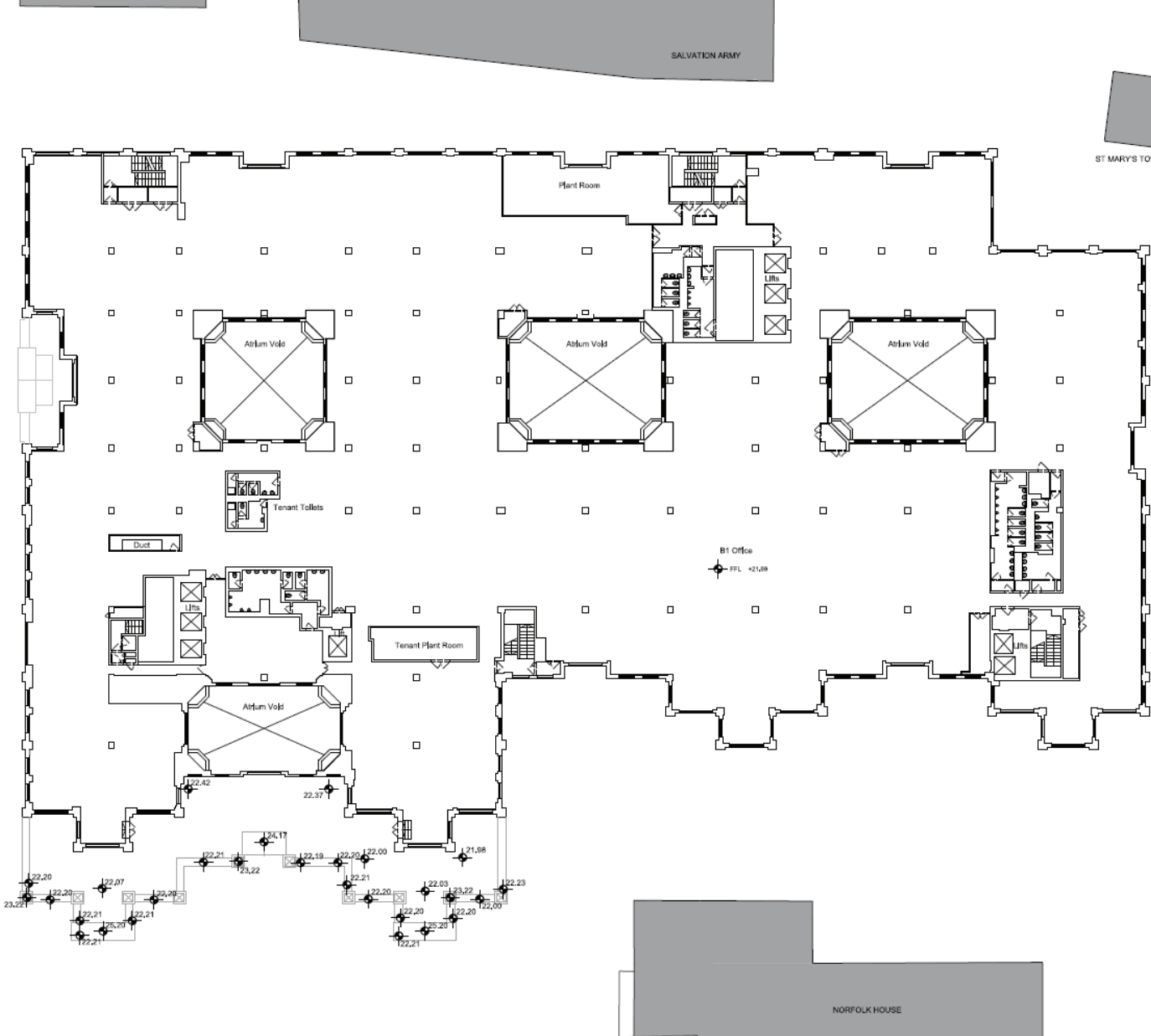


Proposed plan – Level 2

Millennium Bridge House

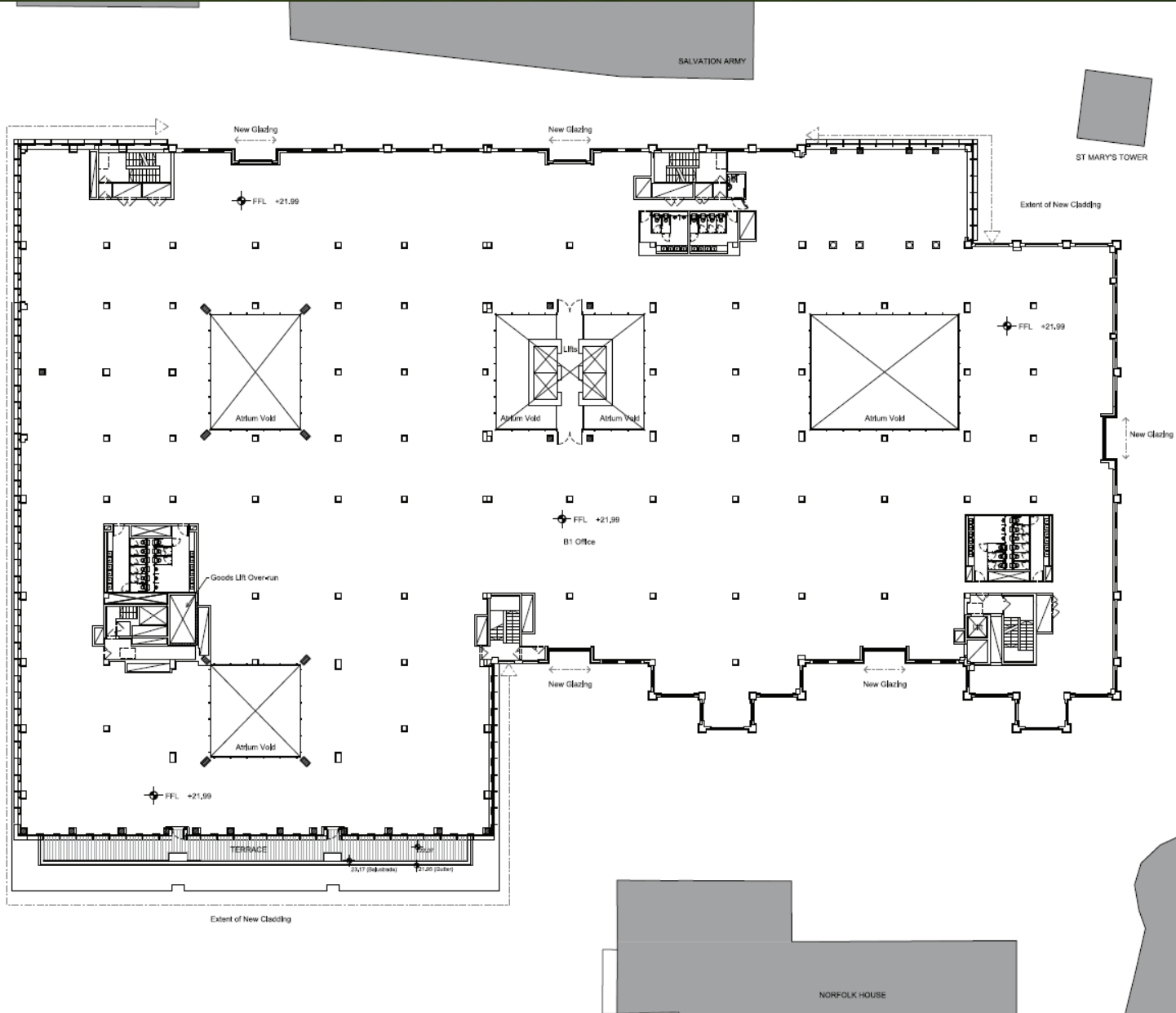
Page 9

CITY OF LONDON SCHOOL



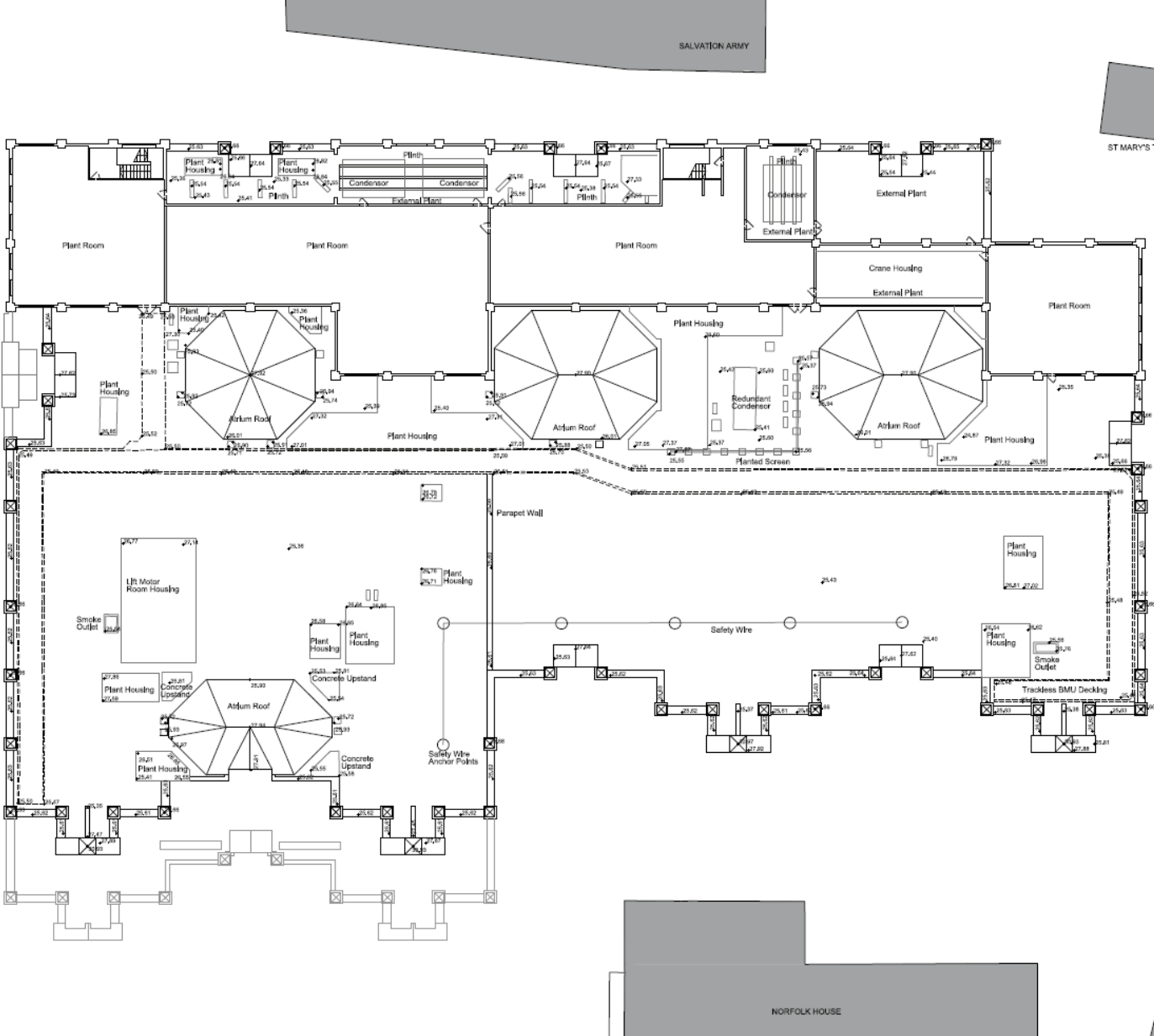
Proposed plan – Level 5

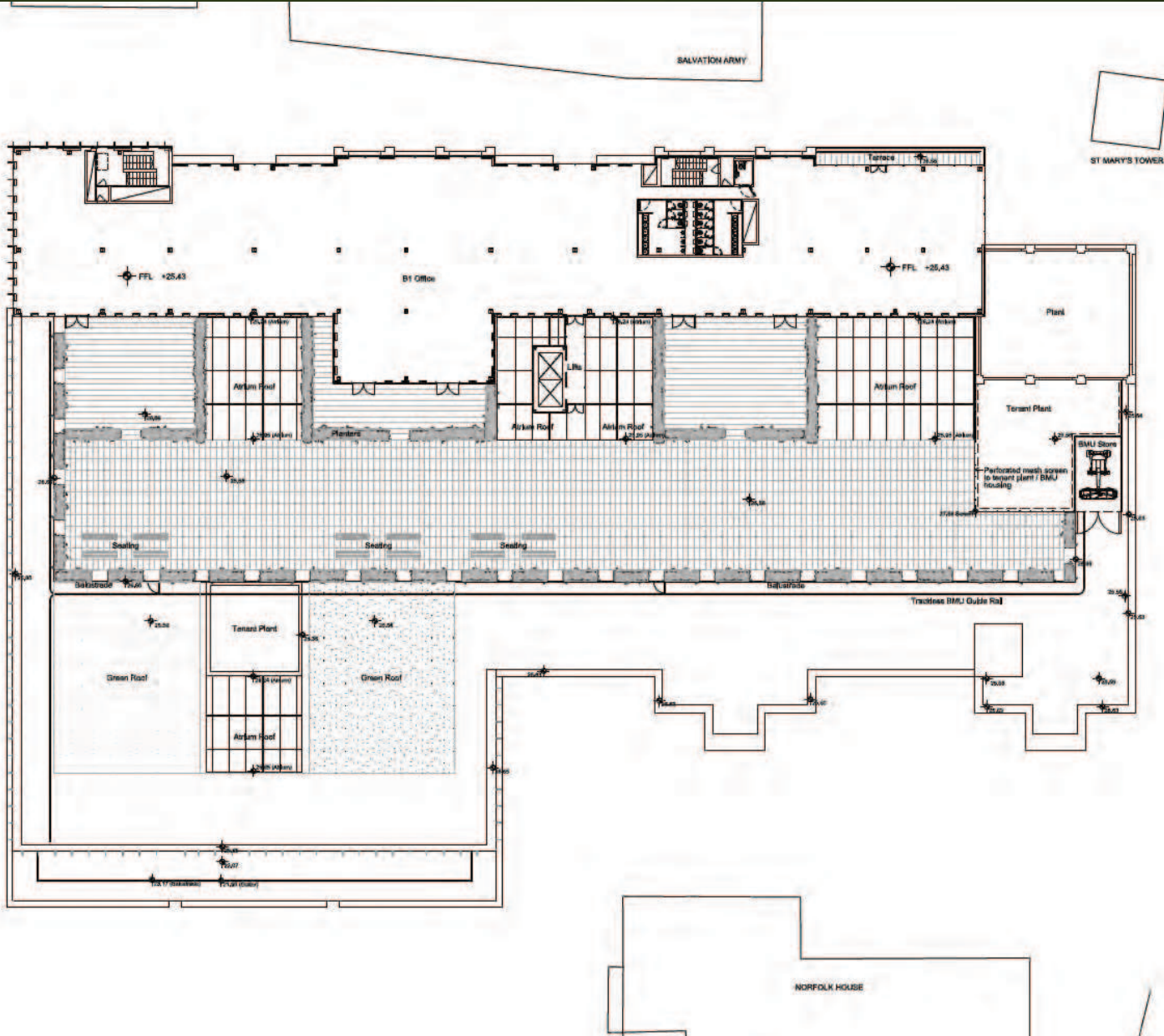
Millennium Bridge House



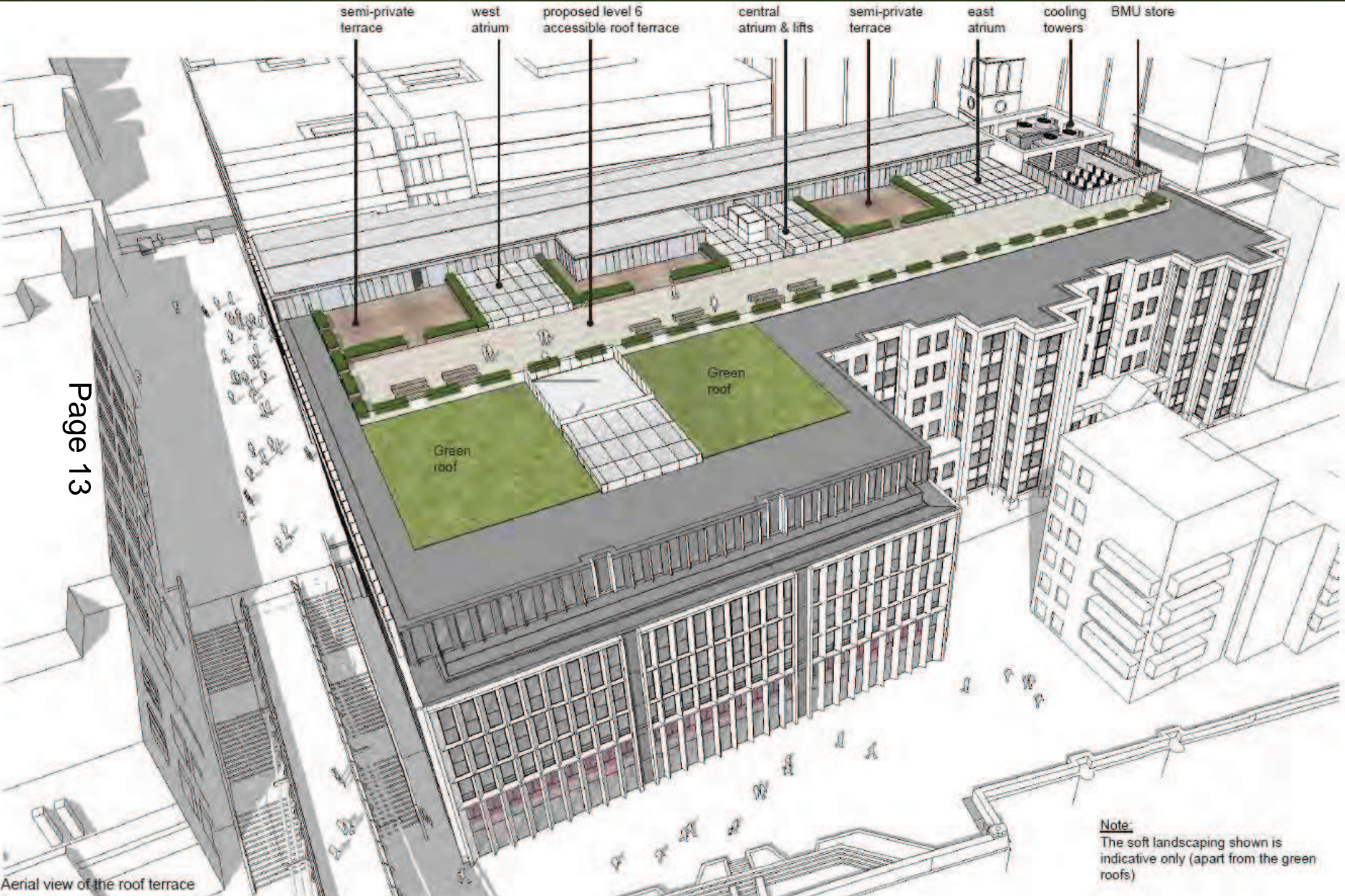
Proposed plan – Level 5

Millennium Bridge House





Millennium Bridge House

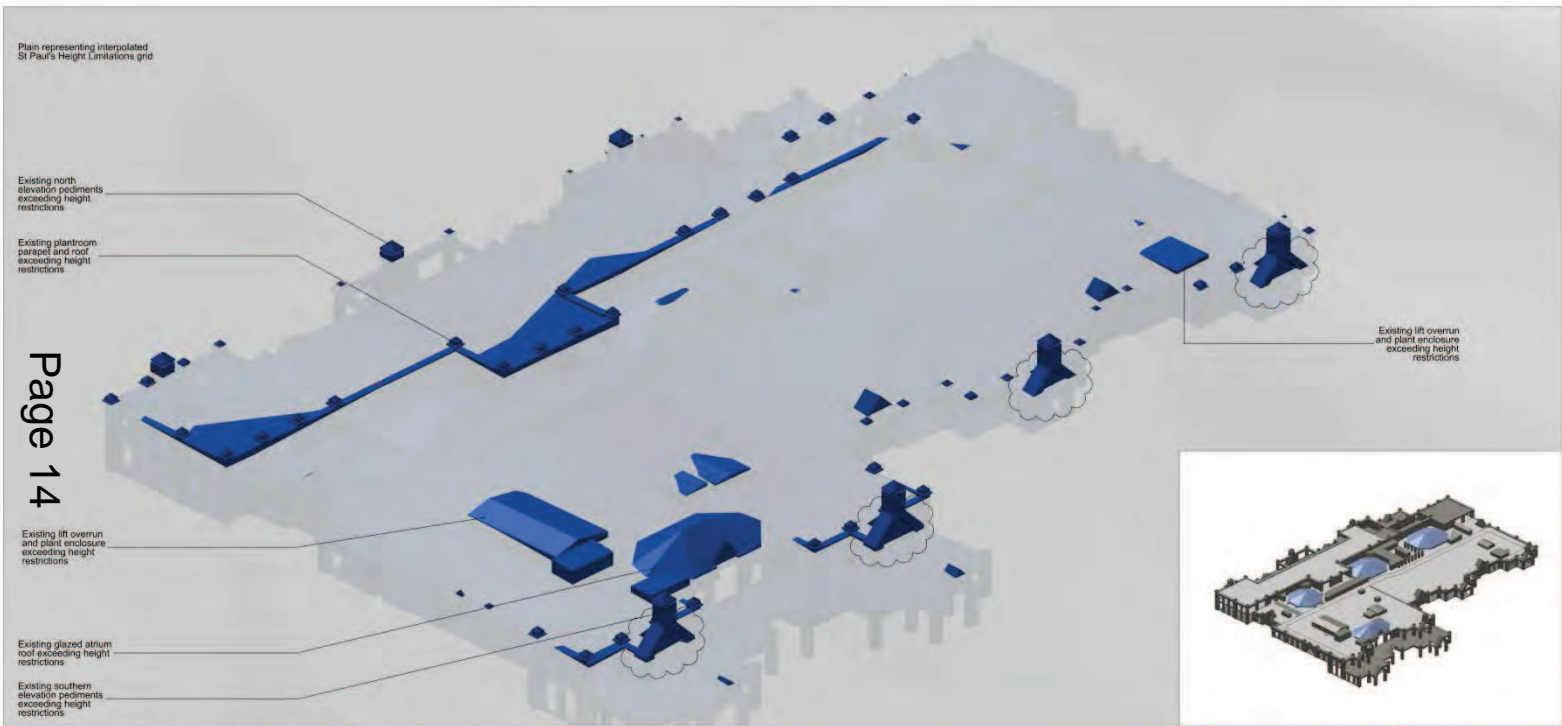


Page 13

Note:
The soft landscaping shown is indicative only (apart from the green roofs)

Aerial view of proposed roof terrace

Millennium Bridge House



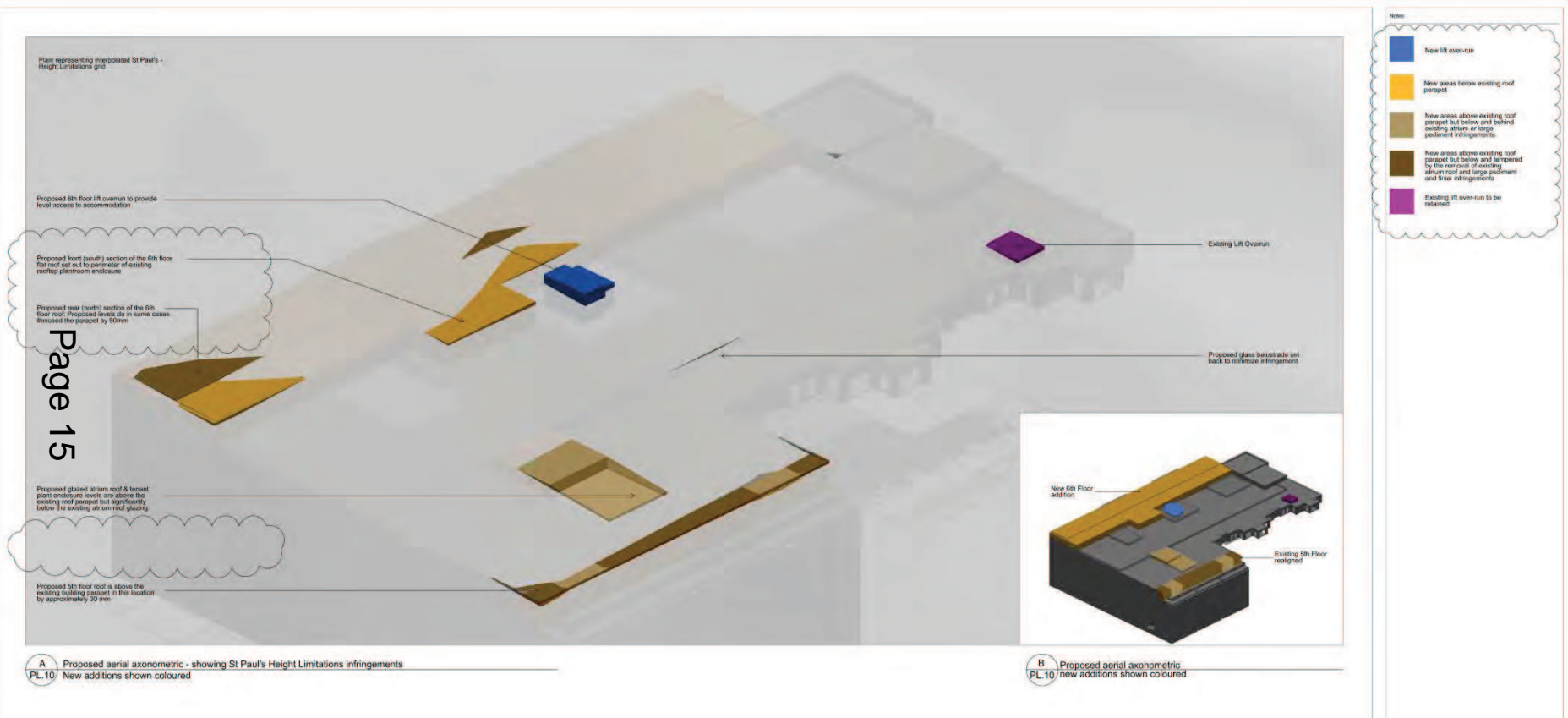
Note:
■ New areas exceeding St Paul's Height Limitations

Page 14

A Existing aerial axonometric - showing St Paul's Height Limitations infringements

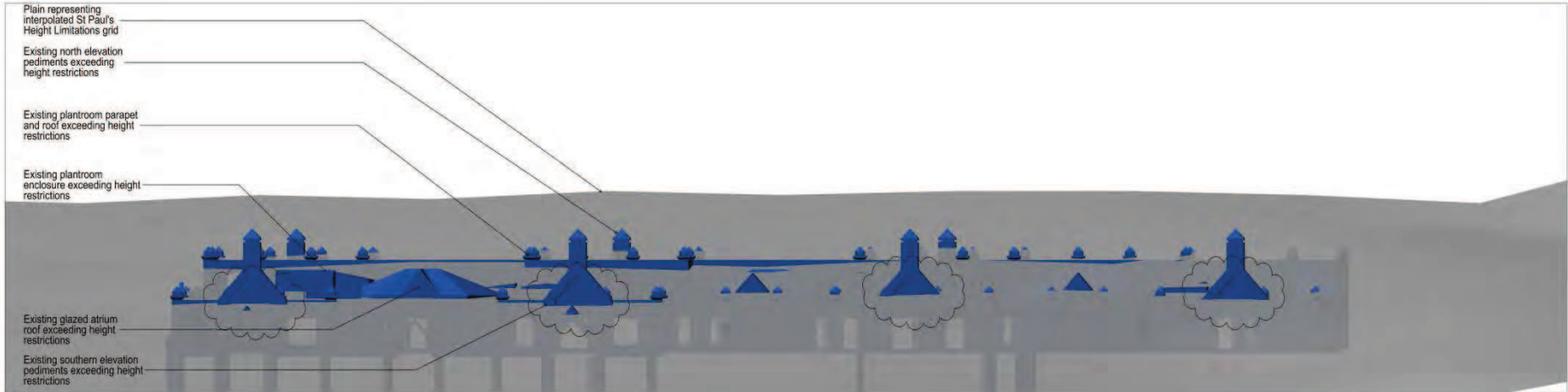
B Existing aerial axonometric - showing massing for reference

Millennium Bridge House



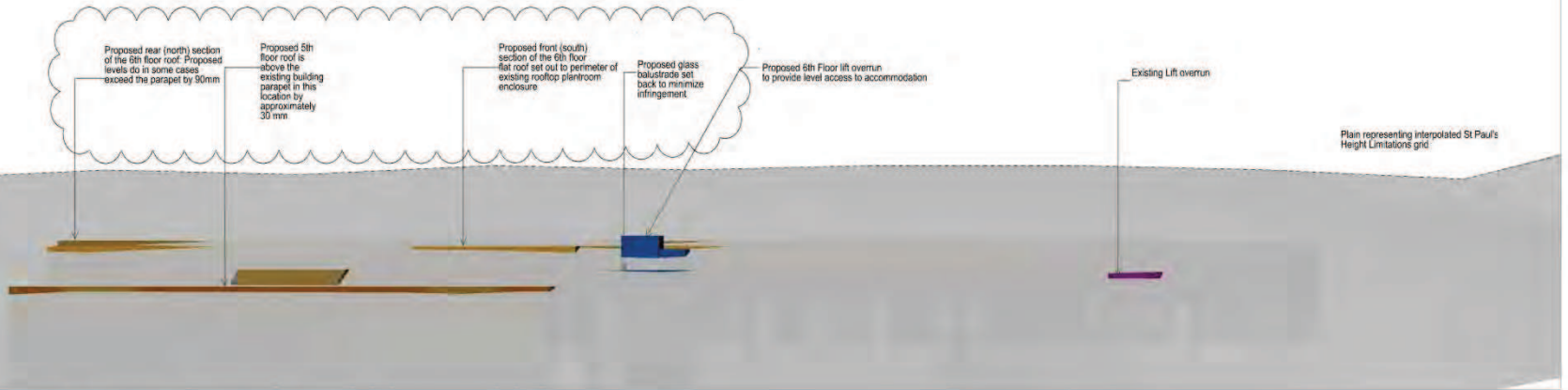
Page 15

Millennium Bridge House



C Existing view from South - showing St Paul's Height Limitations infringements

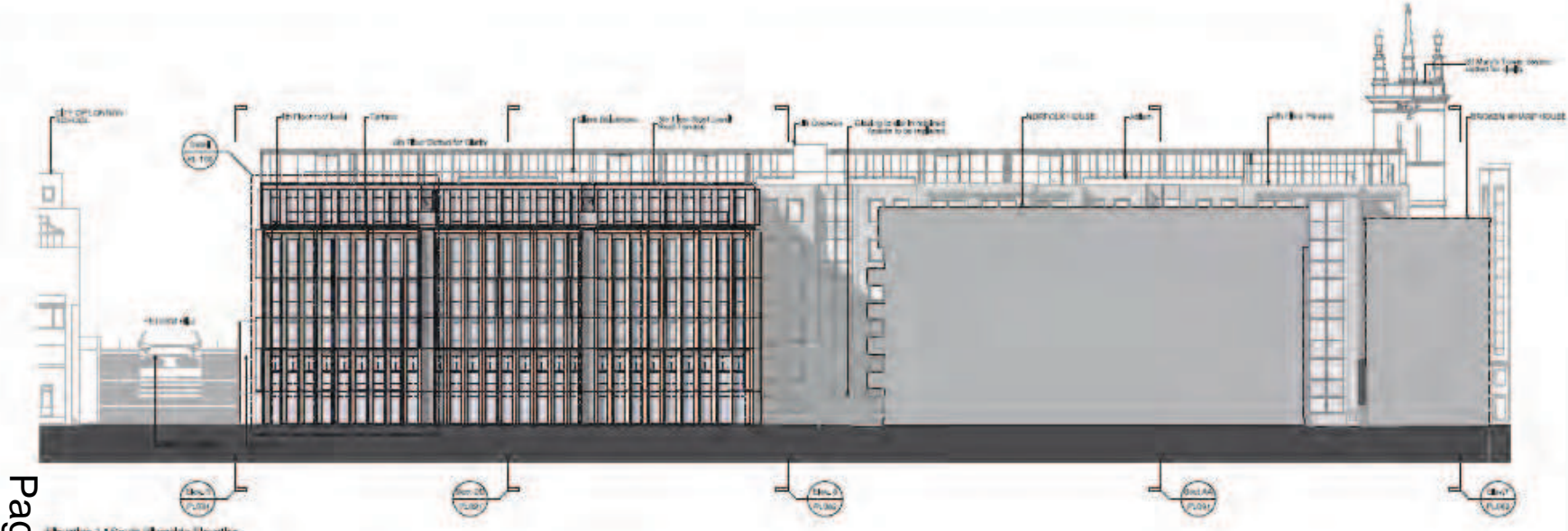
PL.07



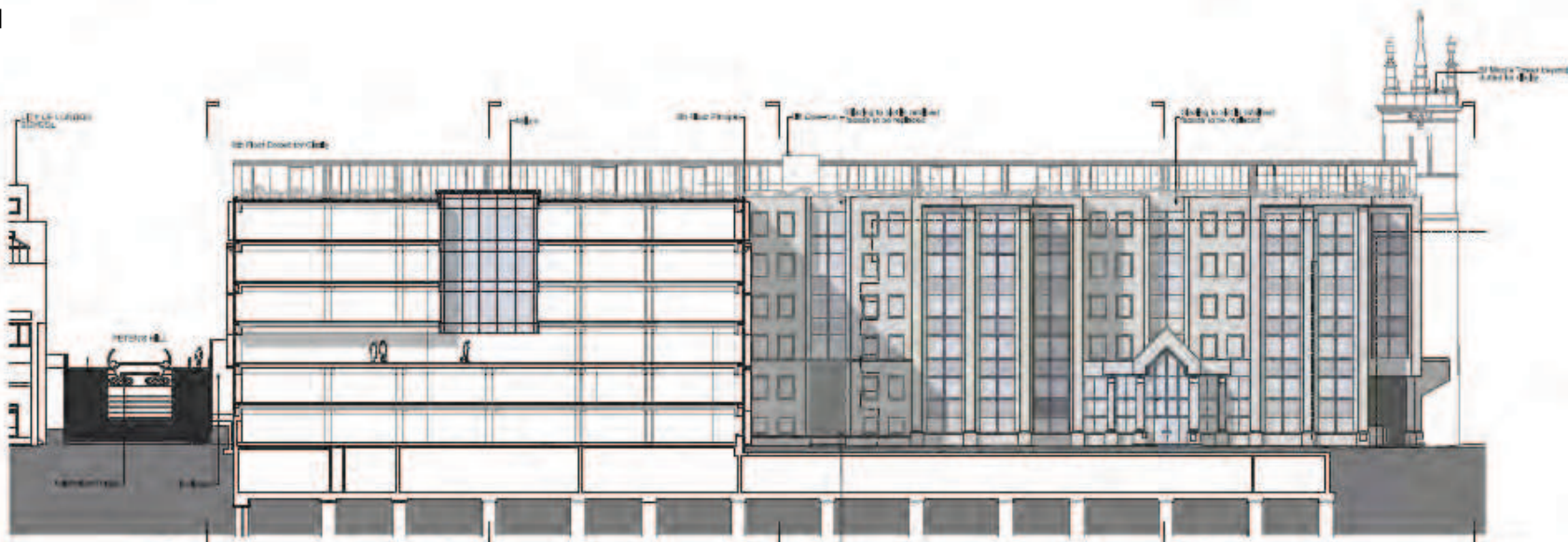
C Proposed view from South - showing St Paul's Height Limitations infringements

PL.10 New additions shown coloured

Millennium Bridge House



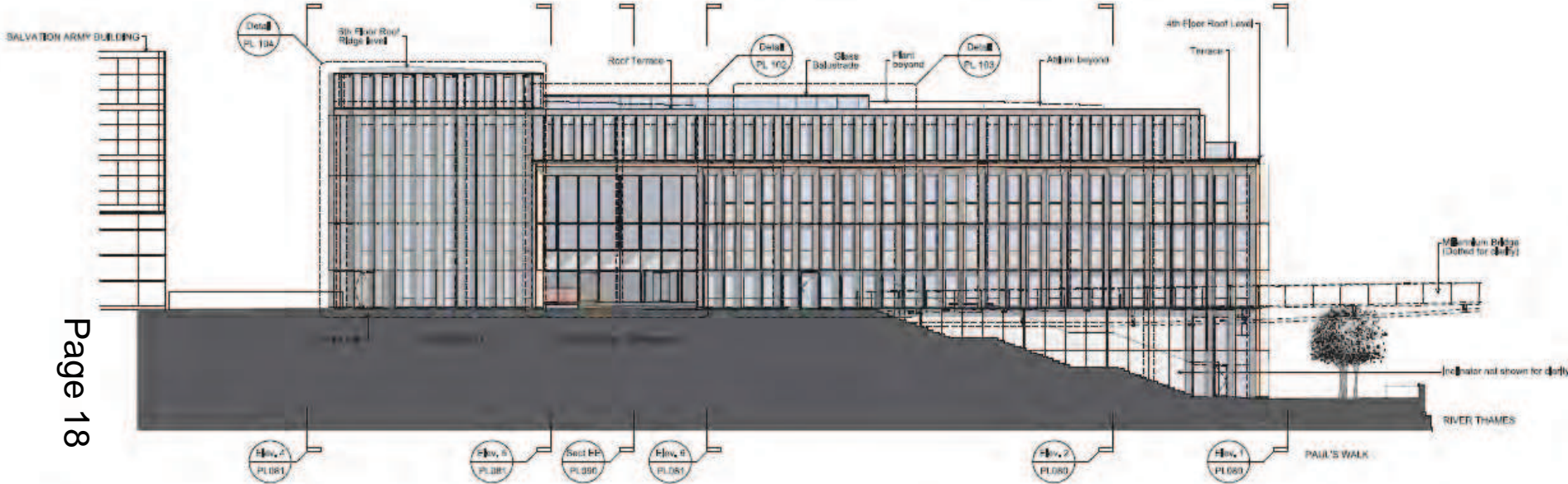
Page 17



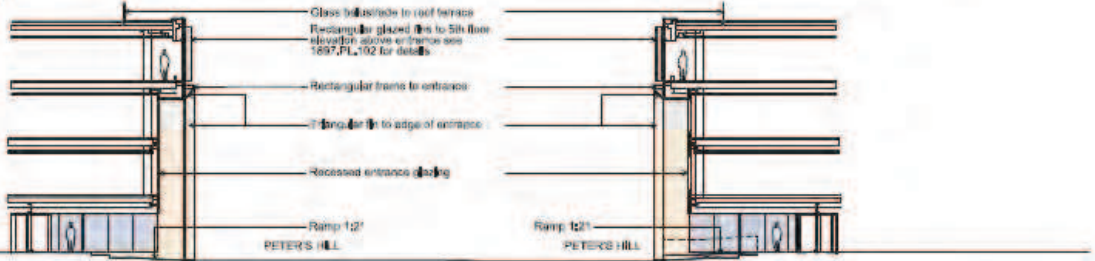
Proposed south elevations

Millennium Bridge House

Page 18



Elevation 3 : West Elevation (Along Peter's Hill)

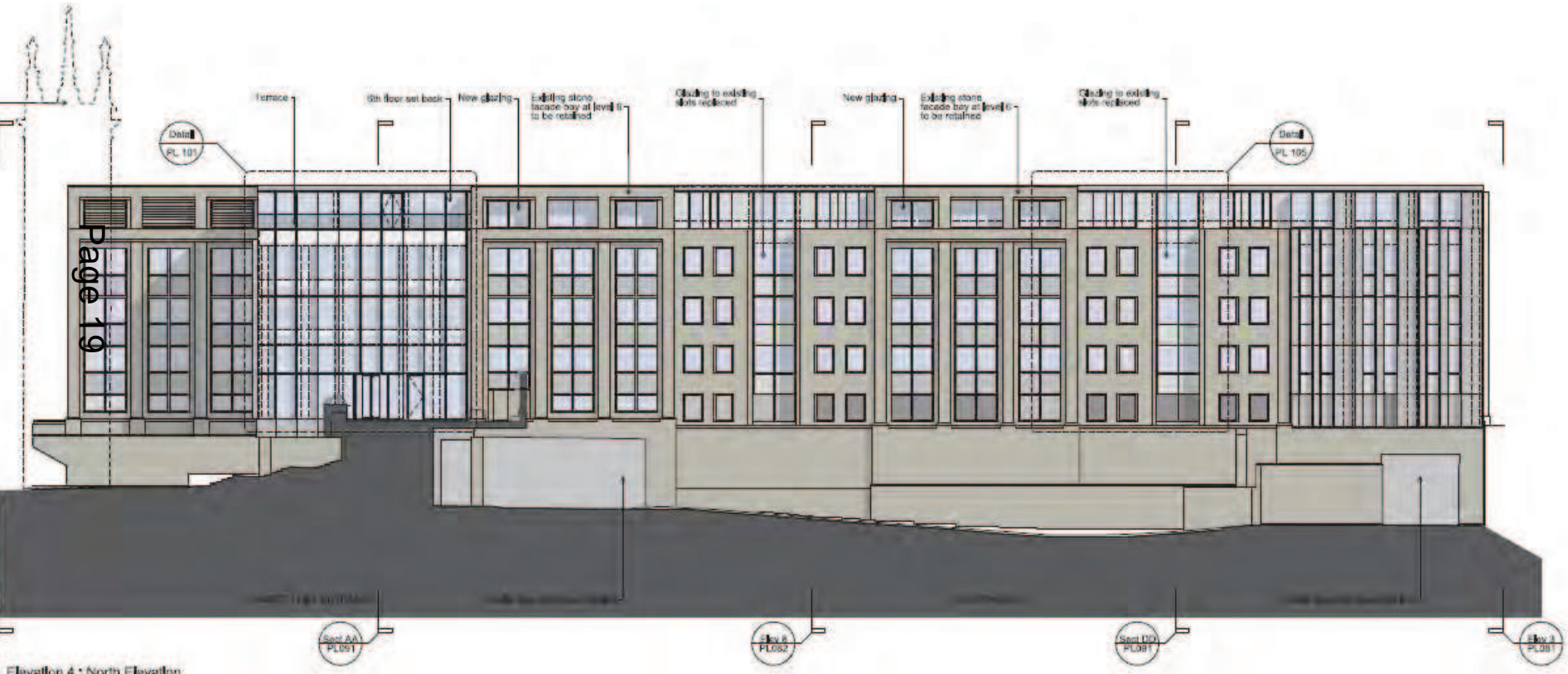


Elevation 5 : West Entrance (Southern Return)

Elevation 6 : West Entrance (Northern Return)

Proposed west elevation

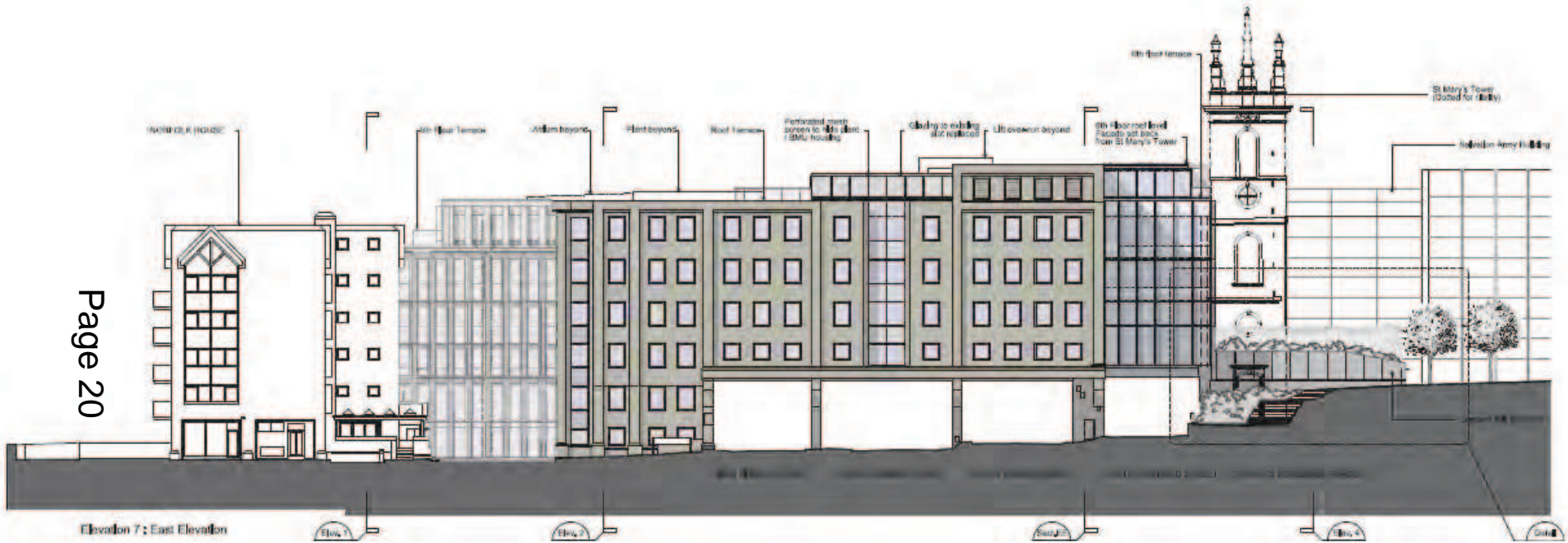
Millennium Bridge House



Proposed north elevation

Millennium Bridge House

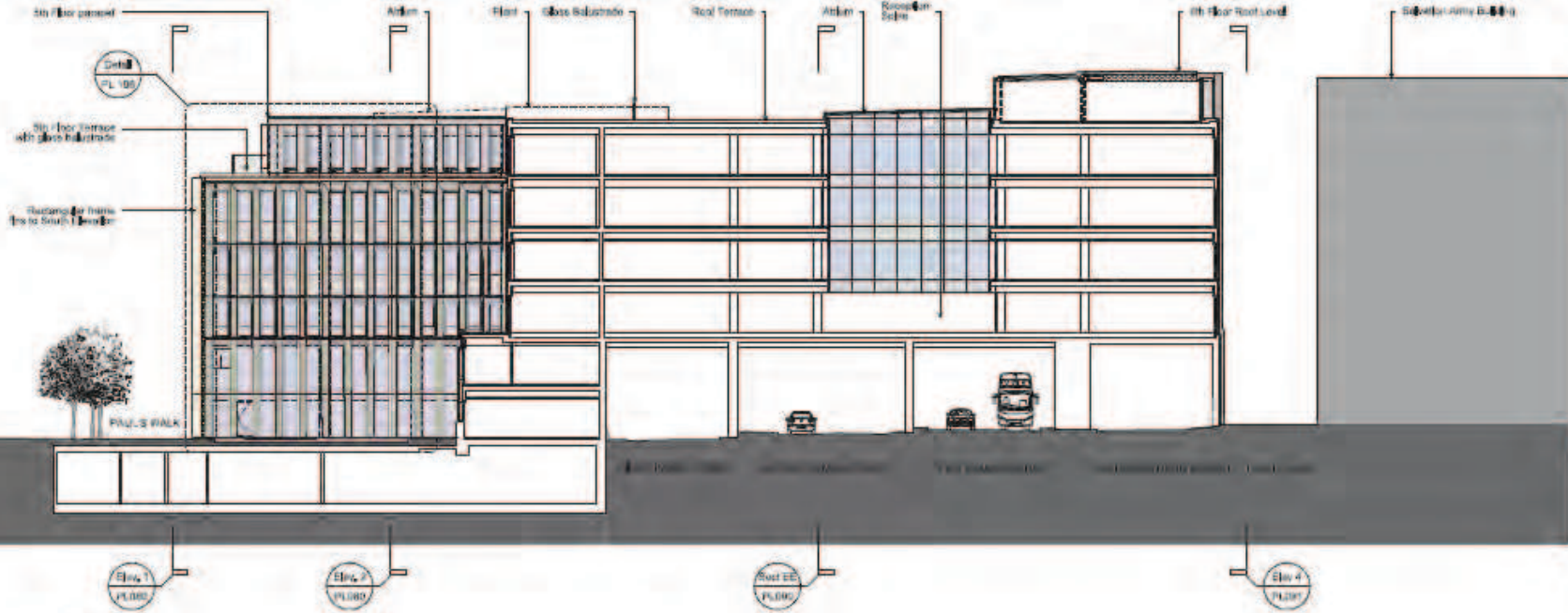
Page 20



Proposed east elevation

Millennium Bridge House

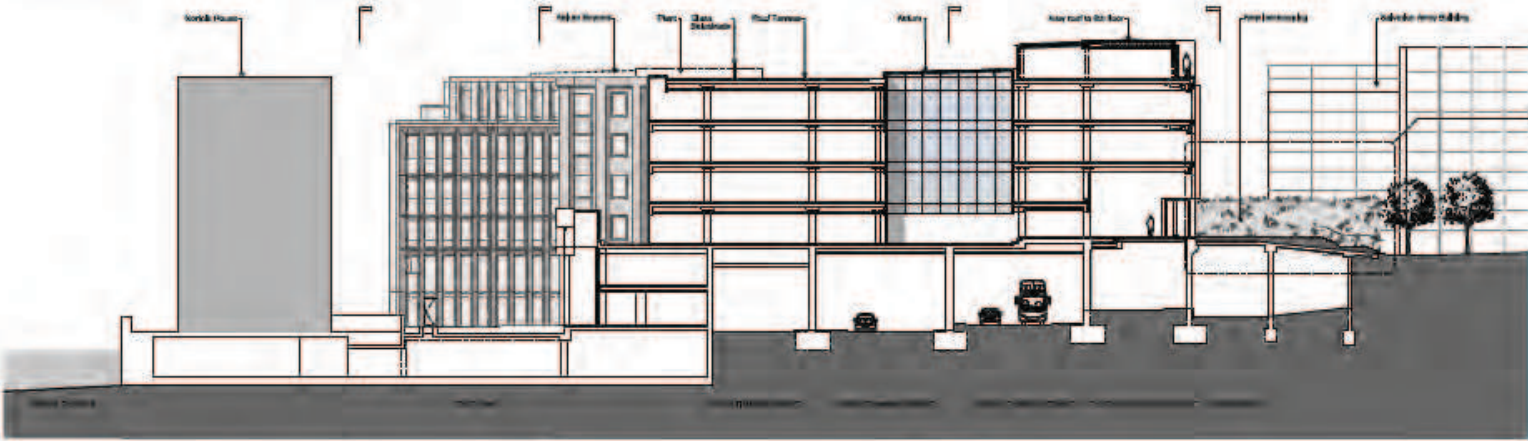
Page 21



Elevation 8 : East Return Elevation

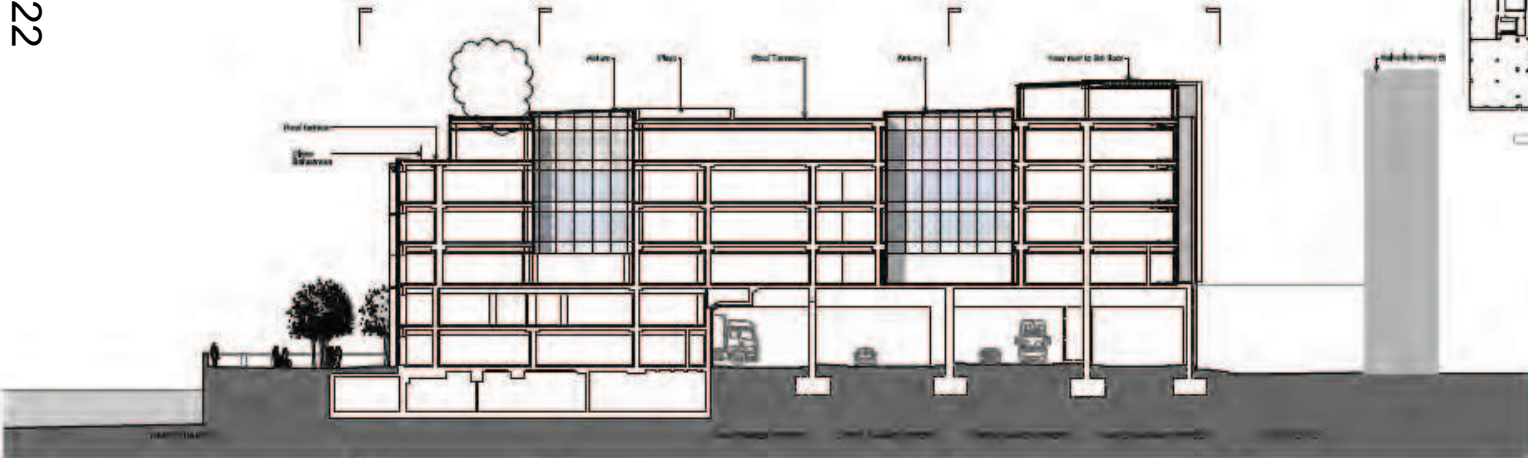
Proposed east return elevation

Millennium Bridge House

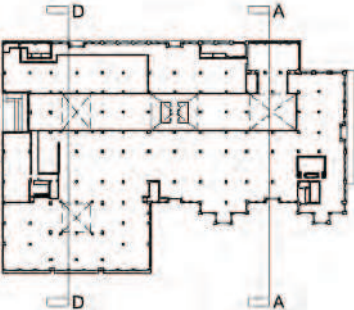


Section AA: North to South (Lamouth Hill Entrance)

Page 22

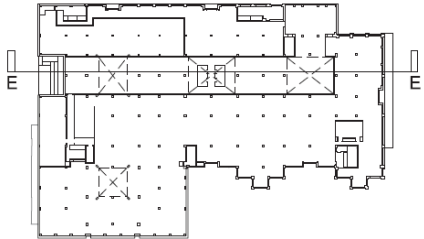


Proposed Section DD: Looking West Through Western Atrium

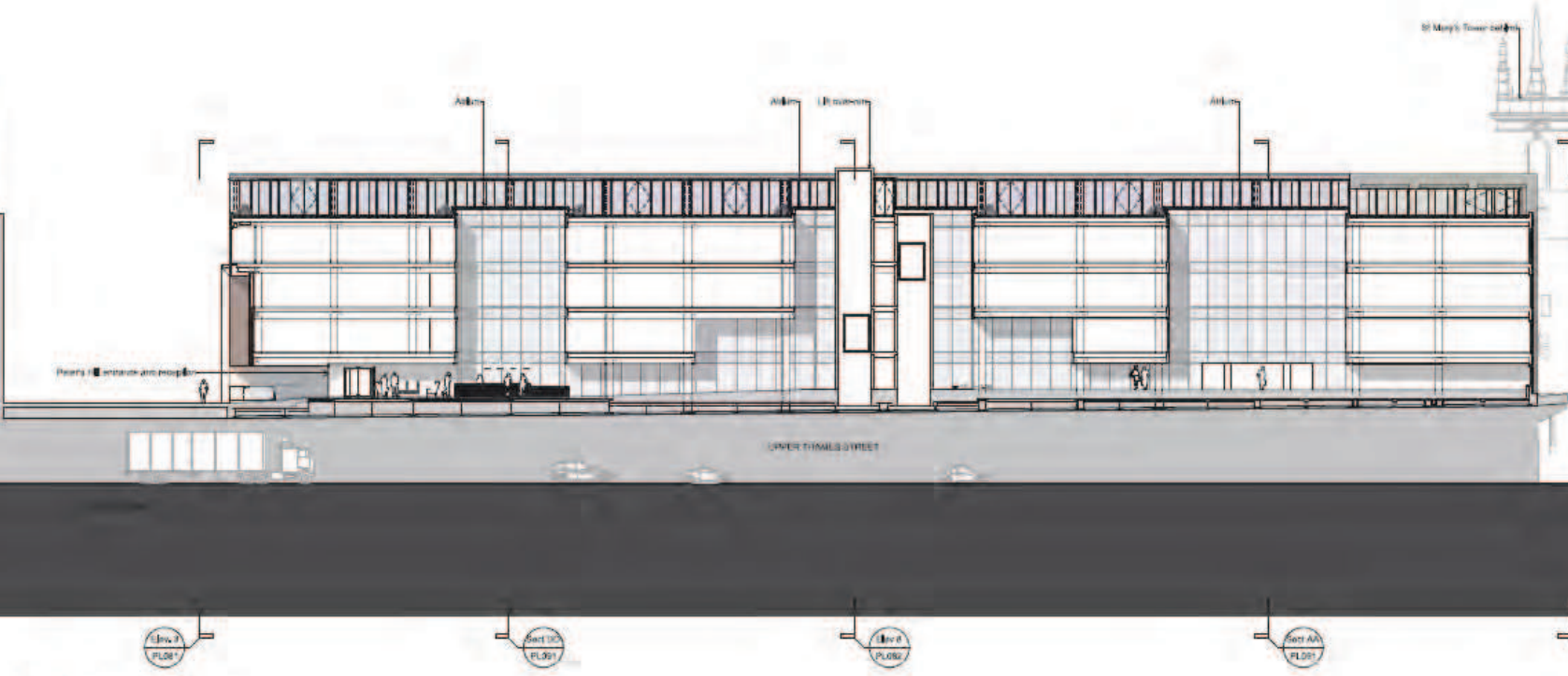


Proposed section AA & DD - Looking west

Millennium Bridge House



Page 23



Proposed section EE - Looking north through Peter's Hill entrance

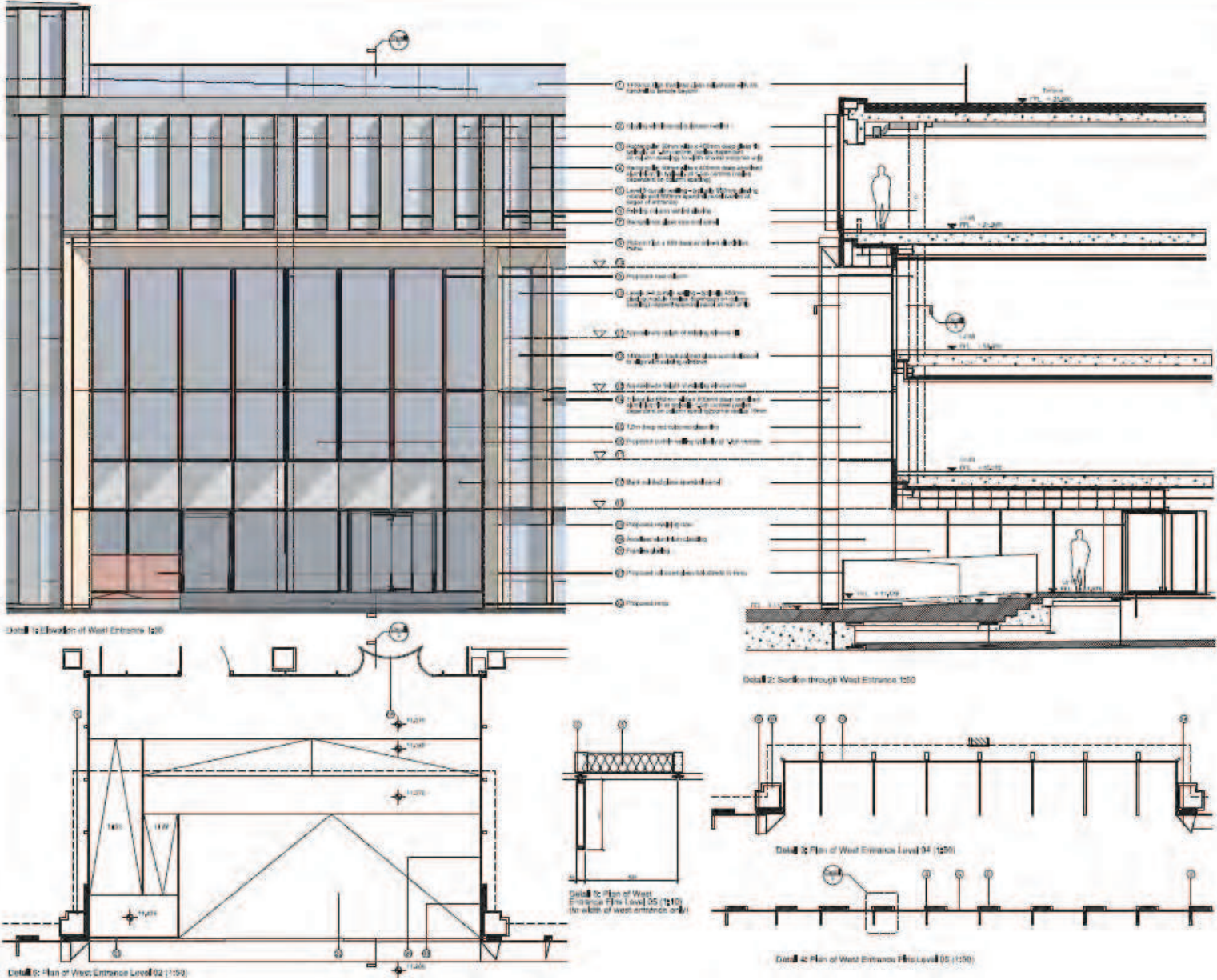
Millennium Bridge House

Page 26

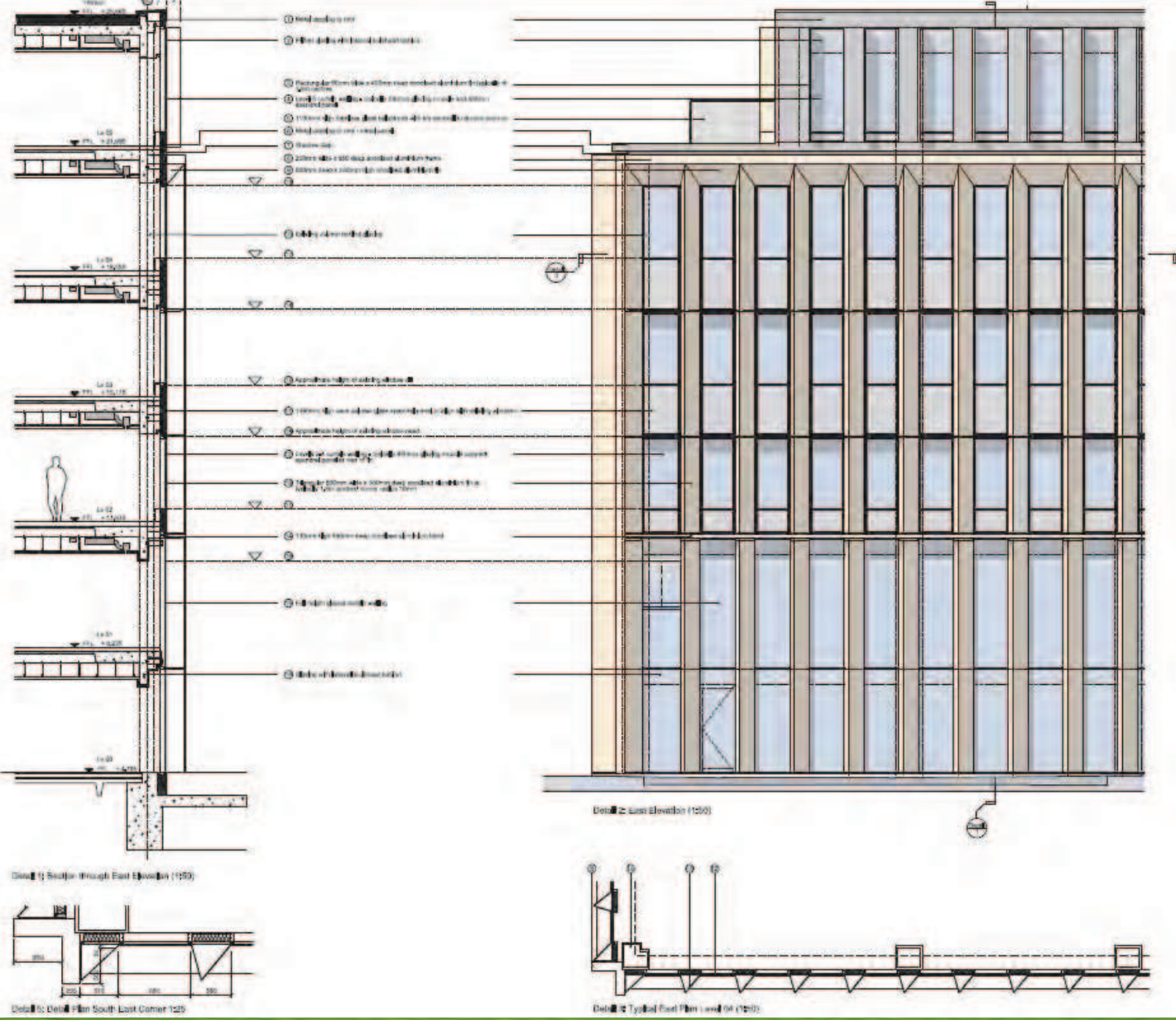


Proposed detailed part elevation – North elevation

Millennium Bridge House



Proposed detailed part elevation – West elevation



Proposed detailed part elevation – East elevation

Millennium Bridge House



Page 31

Existing view from south bank of Thames – LVMF view 13B

Millennium Bridge House



Page 32

Proposed view from south bank of Thames – LVMF view 13B

Millennium Bridge House



Page 33

Existing night time view from south bank of Thames – LVMF view 13B

Millennium Bridge House



Page 34

Proposed night time view from south bank of Thames – LVMF view 13B

Millennium Bridge House

Page 35



Existing view from Millennium Bridge – LVMF view 13A

Millennium Bridge House

Page 36



Proposed view from Millennium Bridge – LVMF view 13A

Millennium Bridge House



Page 37

Existing night time view from Millennium Bridge – LVMF view 13A

Millennium Bridge House



Page 38

Proposed night time view from Millennium Bridge – LVMF view 13A

Millennium Bridge House

Page 39



Existing view from Salvation Army towards Peter's Hill entrance

Millennium Bridge House

Page 40



Proposed view from Salvation Army towards Peter's Hill entrance

Millennium Bridge House



Page 41

Fitness First

Existing view from Queen Victoria Street towards Lambeth Hill entrance

Millennium Bridge House

Page 42

Fitness First



Proposed view from Queen Victoria Street towards Lambeth Hill entrance

Millennium Bridge House

Page 43



Existing view from Upper Thames Street towards St Mary's Church

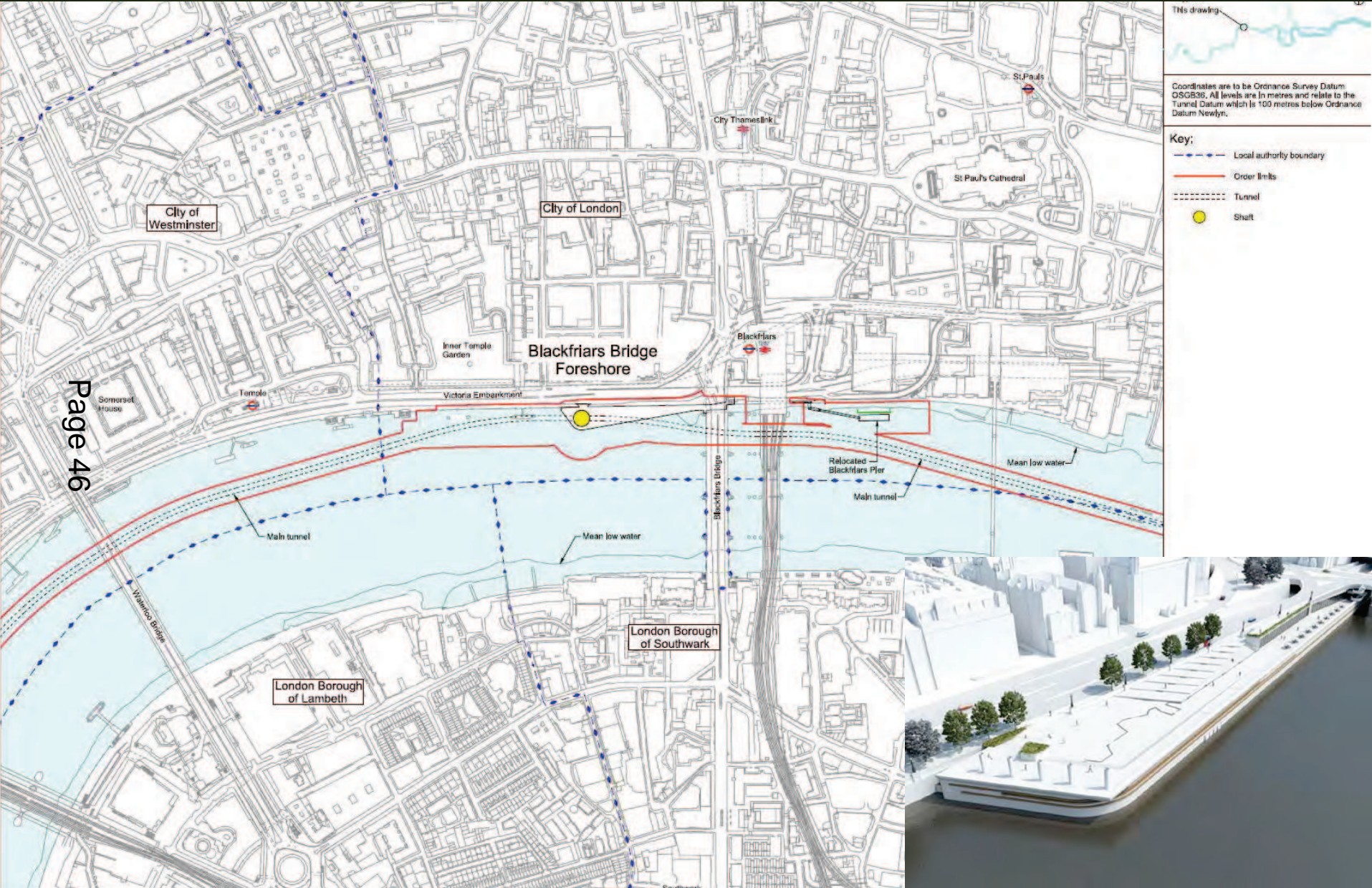
Millennium Bridge House

Page 44



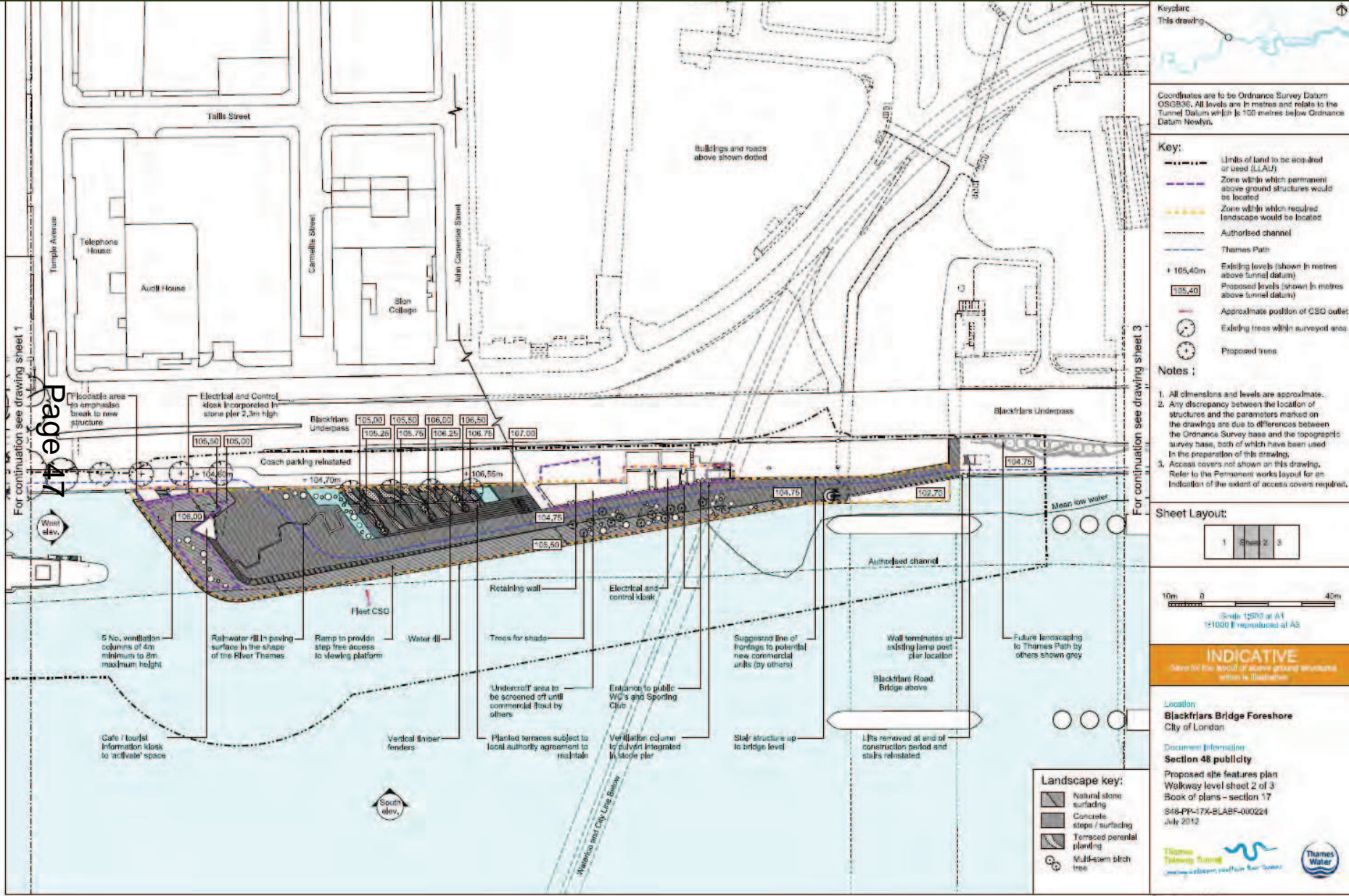
Proposed view from Upper Thames Street towards St Mary's Church

Thames Tideway Tunnel Consultation



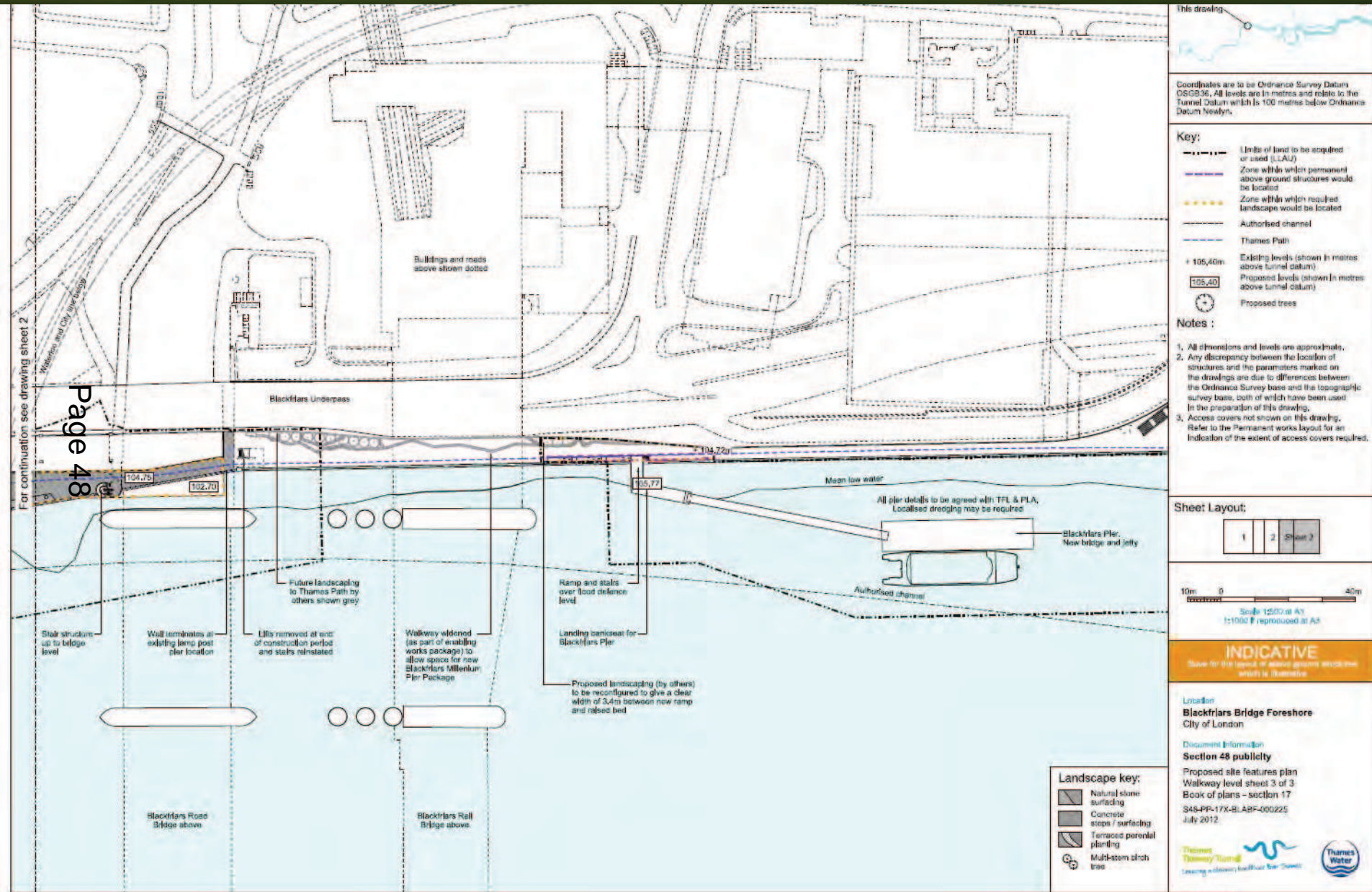
Location Plan

Thames Tideway Tunnel Consultation



Indicative proposals for Blackfriars foreshore

Thames Tideway Tunnel Consultation



Indicative proposals for Blackfriars Pier relocation

Thames Tideway Tunnel Consultation



Indicative proposals



Planning & Transportation

Next Committee
6th November 2012

Page 52

